

| S3251>S6915 (=PH4355) | 820 BC | (1365 BC - 278 BC) | 1008 BC | (1081 BC - 278 BC) | Acree-Brown-Lowensteyn-Salter-Stevens |

Z159

FGC15332
CTS1117/S3885
S8368, S2957
22458459
S3251
7775958
S6915
S6925
24392929
CTS3553
FGC8579
FGC8578
FGC8573
FGC8587

see subclades

BigY 225366 283360
 Not found in FTDNA Not found
 BigY 16631
 BigY 49040 14584 FTDNA 14168

see subclades

BigY N7138 N82242
 BigY N6478 70092
 BigY 299534
 BigY 89020
 BigY N112671 232232
 BigY H1875
 BigY 125832
 BigY 202399
 BigY 231633

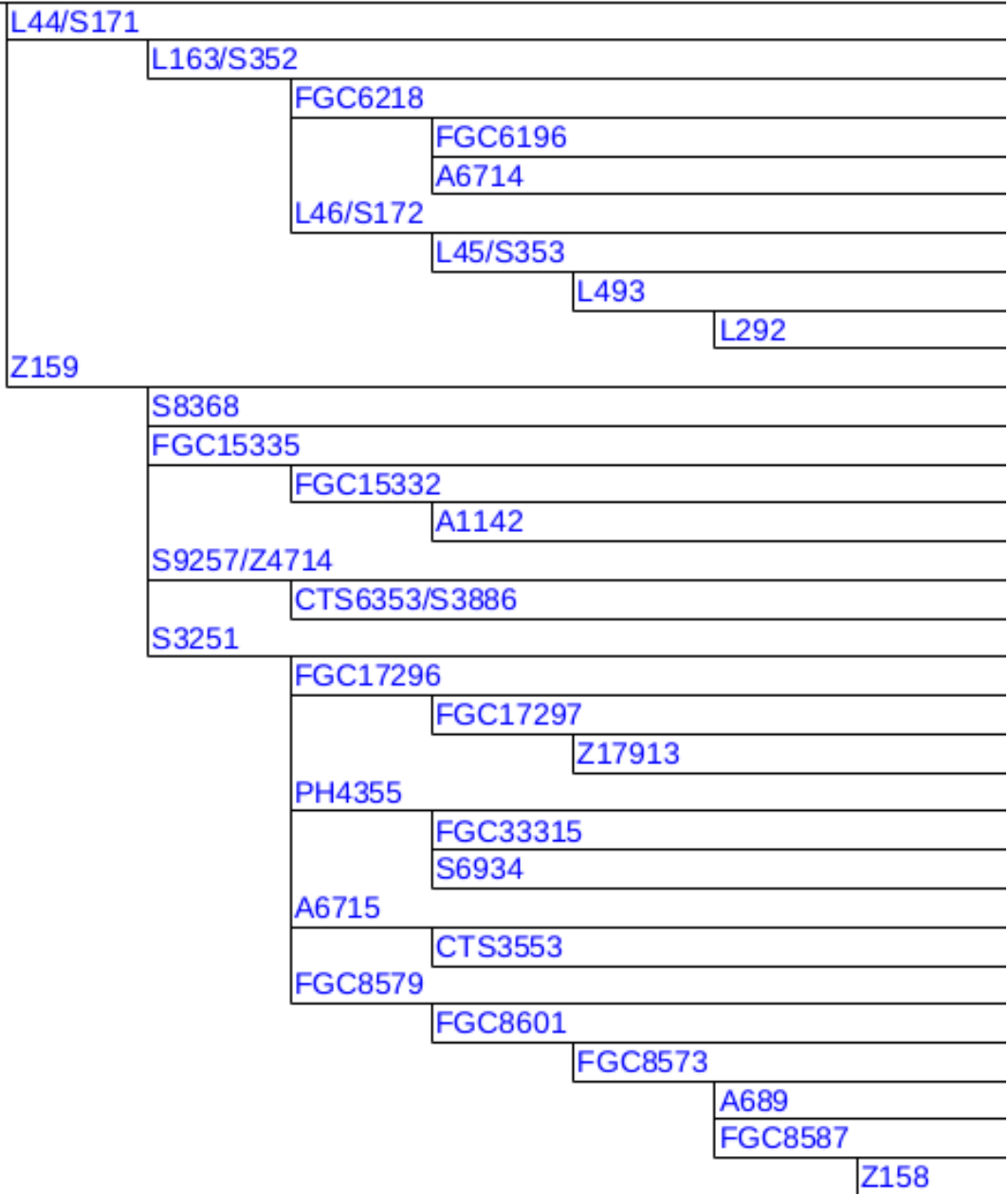
S6915 (PH4355) BigY N6478 70092 H1169 Chromo2 1147 1151(Also Acree N38048 & H1169)

S6915 (PH4355) BigY N6478 70092 H1169
FGC33317 BigY H1169 351782
S6925 BigY 299534

YSEQ DNA Origins Project R1b-L48 Panel

See: PH4355

L47/S170



**APPROXIMATE AGE
Haplogroup**

(1) BigY convergence date: this is the date of birth of the most-recent common ancestor of everyone in that clade who has taken the BigY test. This is different from the most-recent common ancestor of everyone in that clade, which may be better determined with data from other sources, such as Full Genomes Corp. or YSeq tests.

(2) SNP origin date: this is the date at which the stated SNP was formed. It

allows for the fact that many SNPs run in chains, and puts the age halfway up the chain. The uncertainties in this age are correspondingly larger.

(Iain McDonald - R1b1c_U106-S21_Haplogroup Group)

S3251>Y6460 (=FGC17315)	364 BC	(883 BC - 103 AD)	815 BC	(1722 BC - 103 AD)	Paluszewski-Orlowski-Ashmore-Stevens
S3251>Y6460>Y6454 (=FGC17307)	239 AD	(256 BC - 883 AD)	59 BC	(765 BC - 883 AD)	Paluszewski-Orlowski-Ashmore
S3251>Y6453 (=Y6463)	619 AD	(86 BC - 1228 AD)	307 BC	(853 BC - 1186 AD)	Paluszewski-Orlowski
S3251>FGC8590 (=FGC8590)	576 BC	(1046 BC - 149 BC)	724 BC	(1207 BC - 149 BC)	[MANY]
S3251>FGC8590>FGC8579 (=FGC8602)	120 BC	(577 BC - 291 AD)	358 BC	(918 BC - 291 AD)	[MANY]
S3251>FGC8590>FGC8579>FGC8578 (=FGC8601)	298 AD	(120 BC - 670 AD)	13 BC	(619 BC - 670 AD)	Pushinsky-Adelson-Gelman-Pereira-Grudziechi
FGC8578>FGC8573 (=FGC8580)	621 AD	(21 AD - 1142 AD)	387 AD	(314 BC - 1142 AD)	Pushinsky-Adelson-Gelman-Pereira
FGC8578>FGC8573>A689 (=23846791)	1489 AD	(1050 AD - 1860 AD)	951 AD	(70 AD - 1860 AD)	Pushinsky-Adelson
S3251>A688 (=A688)	860 BC	(1282 BC - 376 BC)	986 BC	(51 AD - 376 BC)	[MANY]
S3251>A688>CTS9369 (=CTS9369)	821 BC	(1252 BC - 321 BC)	941 BC	(1282 BC - 321 BC)	Morrison-Graham-Rogers-Barlow-Gillaspy
S3251>A688>CTS9369>18067036 (=28778437)	336 BC	(854 BC - 128 AD)	678 BC	(1252 BC - 128 AD)	Morrison-Graham-Rogers-Barlow
CTS9369>18067036>CTS3553 (=28658791)	1738 AD	(1496 AD - 1941 AD)	571 AD	(867 BC - 1888 AD)	Rogers-Barlow
**	S3251>S6915 (=PH4355)	774 BC	(1282 BC - 305 BC)	959 BC	(824 BC - 305 BC)
S3251>S6915>FGC33315 (=FGC33326)	1489 AD	(1050 AD - 1860 AD)	490 AD	(907 BC - 1815 AD)	Acree-Brown
U106>Z381>L48>Z9 (=Z28)	1815 BC	(2264 BC - 1391 BC)	2103 BC	(1252 BC - 1391 BC)	[MANY]

Z381>Z301>L48>L47>Z159>S3251> S6915 ??? L47 SNP Pack		
N66664	John Flaye, b.c. 1550, Devon, England	United Kingdom
N41915	thomas martens	Netherlands
79571	John Hazel b~1690 Suffolk, Engl; m1712 Mary Borret	England
Z381>Z301>L48>L47>Z159>S3251> S6915>		
223317	Robert Barr, b. 1864 and d. 1931	Unknown Origin
237488	John Peel (c1813-1853) b. Staffordshire, England	England
Z381>Z301>L48>L47>Z159>S3251> S6915> FGC33317		
N38048	William Acree (c1710-c1767) of Hanover Co., VA	United Kingdom
351782	Daniel Brown (1819-1898) b. Philadelphia, PA	Unknown Origin
H1169	William Acree (c1710-c1767) of Hanover Co., VA	United Kingdom
Z381>Z301>L48>L47>Z159>S3251> S6915> 8113943		
273395	John Spurgen, d. 1570	United Kingdom
70092	James Herd Stevens (b. 1807 TN)	Unknown Origin
Z381>Z301>L48>L47>Z159>S3251> S6915> 8557912		
N6478	Johann Koenrad Löwenstein, d. 1783	Germany
Z381>Z301>L48>L47>Z159>S3251> S6915>S6925		
340087	William Salter, b. 1780, England? d. 1843	England
299534	William Salter, b.c. 1780; d.c. 1843	Unknown Origin
365123	Simon Boykin Salter, b. 1801 and d. 1855	United Kingdom